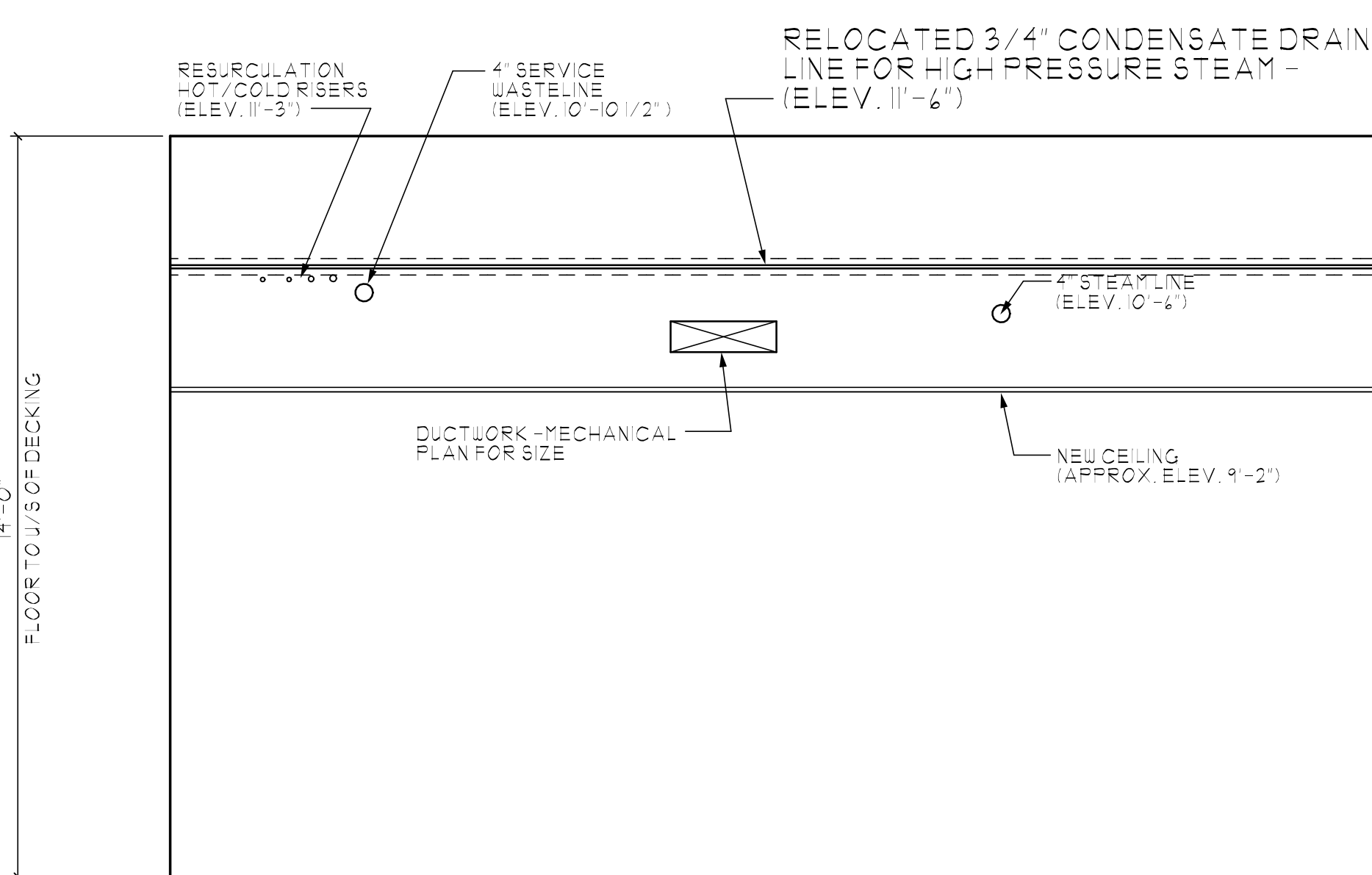


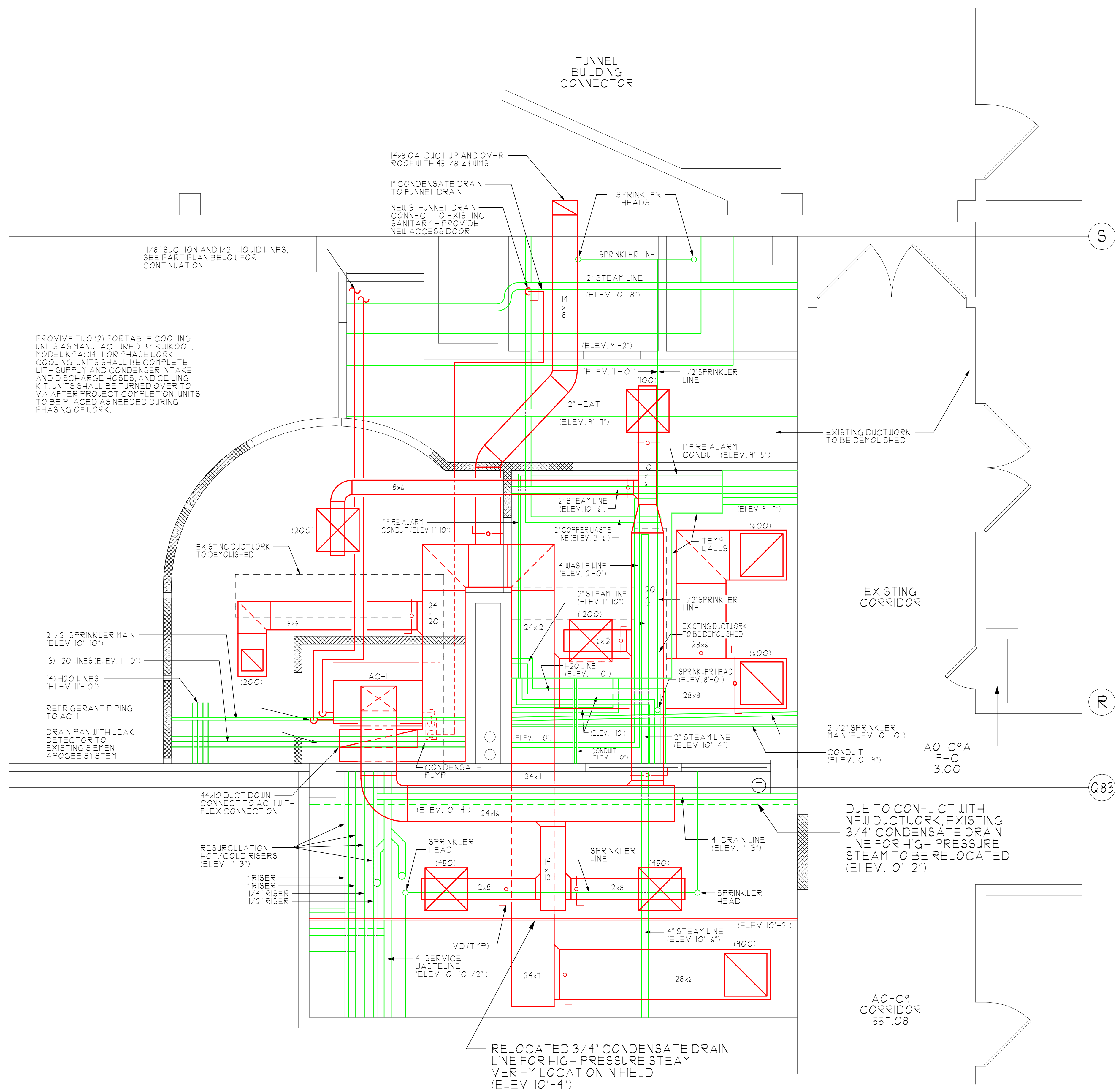
ELEVATION @ CONDENSATE DRAIN LINE CONFLICT

SCALE: 3/8" = 1'-0"



ELEVATION @ RELOCATED CONDENSATE DRAIN LINE

SCALE: 3/8" = 1'-0"



EXISTING & NEW MECHANICAL LAYOUT PLAN

SCALE: 3/8" = 1'-0"

ADMISSION OF ERROR, OMISSION AND/OR OVERSIGHT:
 OUR DEDICATION TO EXCELLENCE AND OUR COMMITMENT TO THE
 SUCCESS OF OUR CLIENTS ARE THE FOUNDATION OF OUR BUSINESS.
 AS AN ENGINEERING AND ARCHITECTURAL FIRM, WE WILL ADMIT TO
 ANY MISTAKE OR ERROR THAT WE MAKE AND WE WILL CORRECT IT
 IMMEDIATELY. WE WILL NOT DENY ANY LIABILITY THAT WE MAY
 INCUR AS A RESULT OF OUR NEGLIGENCE OR THE NEGLIGENCE OF
 ANY OF OUR EMPLOYEES OR AGENTS. WE WILL NOT DENY ANY
 LIABILITY THAT WE MAY INCUR AS A RESULT OF OUR NEGLIGENCE
 OR THE NEGLIGENCE OF ANY OF OUR EMPLOYEES OR AGENTS.
 APPROVED AND SUBMITTED FOR THE CONTRACTOR BY THE
 ARCHITECT'S PROFESSIONAL SEAL AND SIGNATURE.
 DATE: 7/9/12

WELLINGTON TRADE CENTER
 27 LOWELL ST., SUITE 403
 MANCHESTER, NH 03103
 P: 603-836-5660
 F: 603-836-5661
 INFO@FSMDRAWINGS.COM

FSM
 Drawings

PROJECT:
 EXISTING CONDITIONS FOR TELEPHONE
 OPERATOR'S SUITE, BUILDING 200,
 BASEMENT, VA MEDICAL CENTER
 NORTHPORT, NEW YORK 11788

PREPARED FOR:
 21 FACTORY STREET
 NASHUA, NH 03060
 (603)-966-4578

MONUMENT
 CONSTRUCTION

JOB NO.: FSM12-081MS
 SCALE: 3/8" = 1'-0"
 DATE ISSUED: 7/9/12
 DATE DRAWN: 6/4/12
 CHECKED BY: PD
 DRAWN BY: MM

NO.	DATE	REVISION
1	6/4/12	PLAN ISSUED FOR REVIEW
2	7/9/12	REVISED PER ARCHITECT'S COMMENTS

M-1