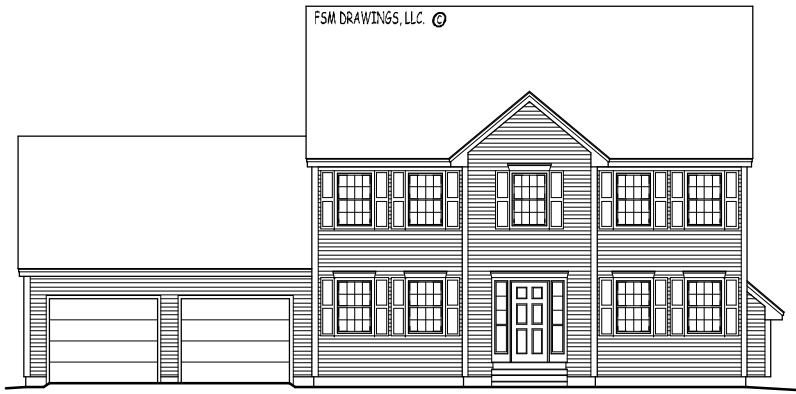




27 LOWELL STREET | SUITE 503  
 MANCHESTER, NH 03101  
 TEL 603-836-5660  
 FAX 603-836-5661  
 WEB www.fsmdrawings.com  
 EMAIL info@fsmdrawings.com



FRONT ELEVATION

# THE Hancock

## 60' x 30' COLONIAL STYLE HOME (Approximate Overall Footprint Dimension)

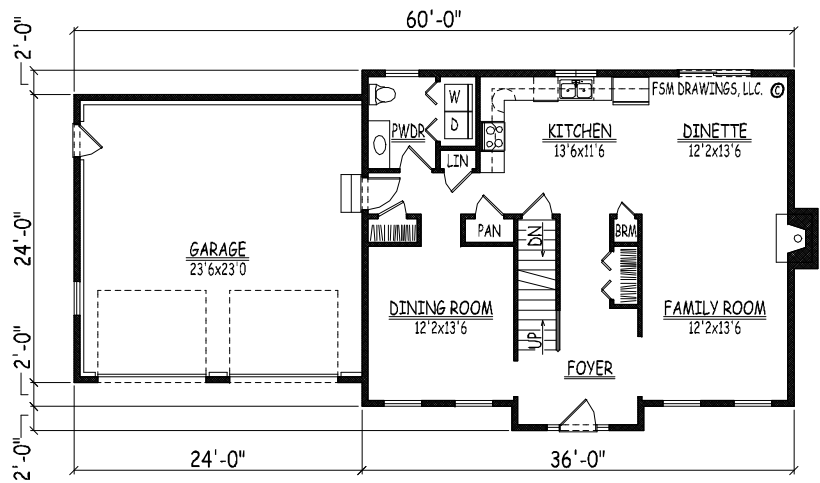
A 60'x30' Colonial Style 3-Bedroom Home offering 2 1/2 Baths, a Study, and Front - to - Back Open Dinette/Family Area w/ Opt. Gas Fireplace

First Floor Laundry, Ample Closet Space, 2-Car Garage

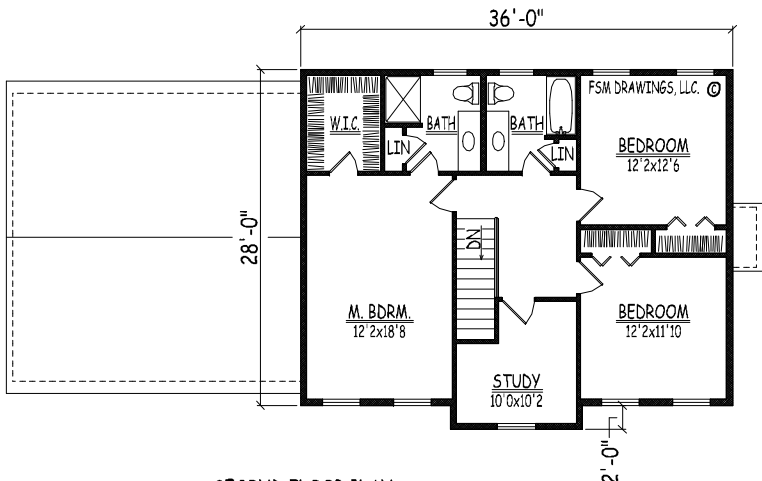
Plan can be Mirrored for a Right Side Garage or even changed to a Side or Below Grade Entry if Site Permits. Optional Walk - Up Attic also available

2x6 Wall Construction ready for 2009 IECC Energy Code Standards

Designed for a Ground Snow Load of 70 lb/ft<sup>2</sup>  
 (Can be adjusted to meet IBC Standards)



FIRST FLOOR PLAN



SECOND FLOOR PLAN

## SQUARE FOOTAGE TABLE

(TOTALS EXCLUDE UNFINISHED/STORAGE & GARAGE)

PLAN	SQ. FTG.
FIRST FLOOR	1,030
SECOND FLOOR	1,030
<b>TOTAL:</b>	<b>2,060</b>

NOTES: FOR PLAN # 10125CO