

FRONT ELEVATION

THE Carrigan

29' x 26' CAPE STYLE HOME
(Approximate Overall Footprint Dimension)

A 29' x 26' Cape Style 2-Bedroom Home offering 2 Baths and large Kitchen and Living Rm. w/ optional fireplace

First Floor Guest Rm. & Eave Storage

At Under 1,300 Square Feet, The Carrigan offers plenty of space for your family and a Drive-Under Garage can be added

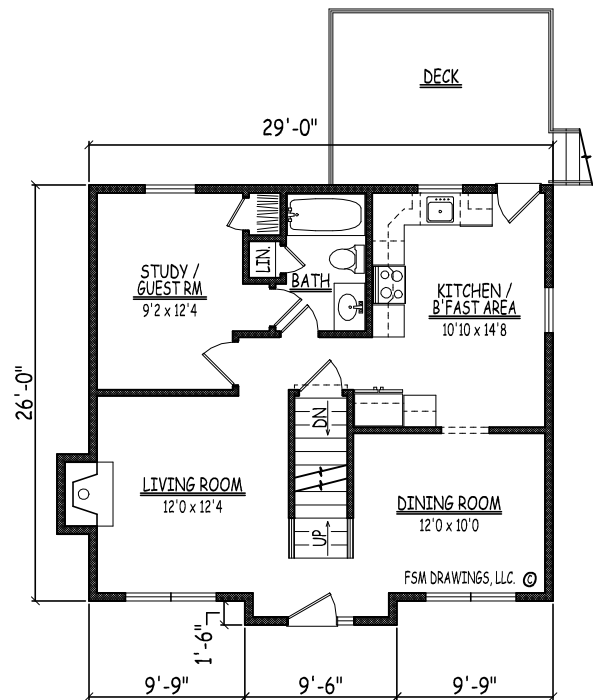
2x6 Wall Construction ready for 2009 IECC Energy Code Standards

Designed for a Ground Snow Load of 70 lb/ft²
(Can be adjusted to meet IBC Standards)

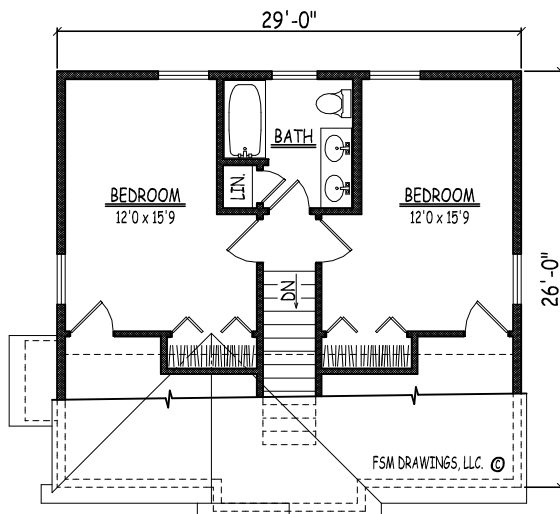


27 LOWELL STREET | SUITE 503
MANCHESTER, NH 03101

TEL 603-836-5660
FAX 603-836-5661
WEB www.fsmdrawings.com
EMAIL info@fsmdrawings.com



FIRST FLOOR PLAN



SECOND FLOOR PLAN

SQUARE FOOTAGE TABLE

(TOTALS EXCLUDE UNFINISHED/STORAGE & GARAGE)

PLAN	SQ. FTG.
FIRST FLOOR	768
SECOND FLOOR	518

TOTAL: 1,286

NOTES: FOR PLAN # 11013CA